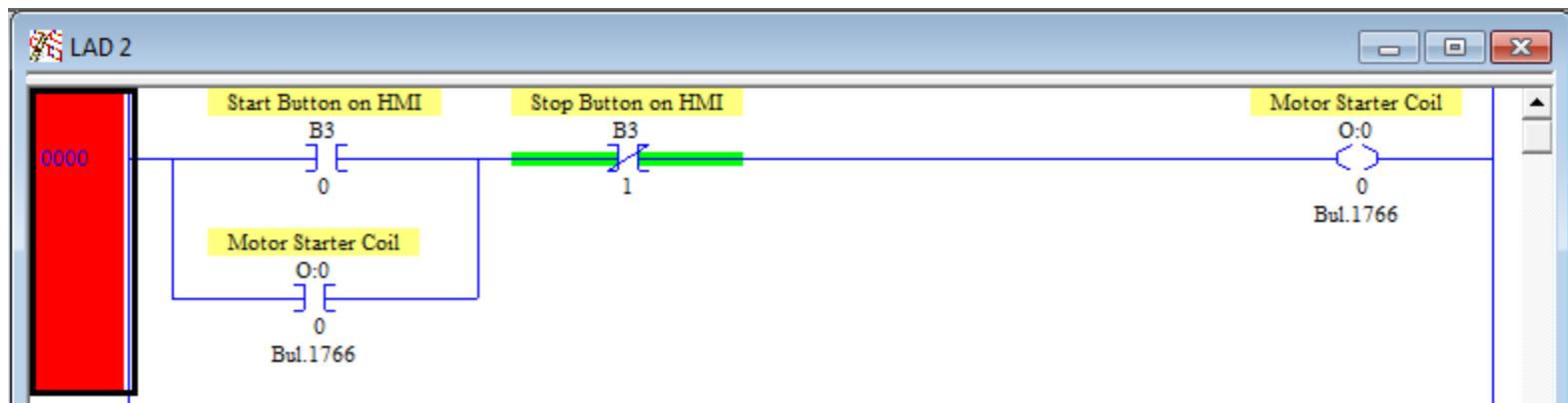
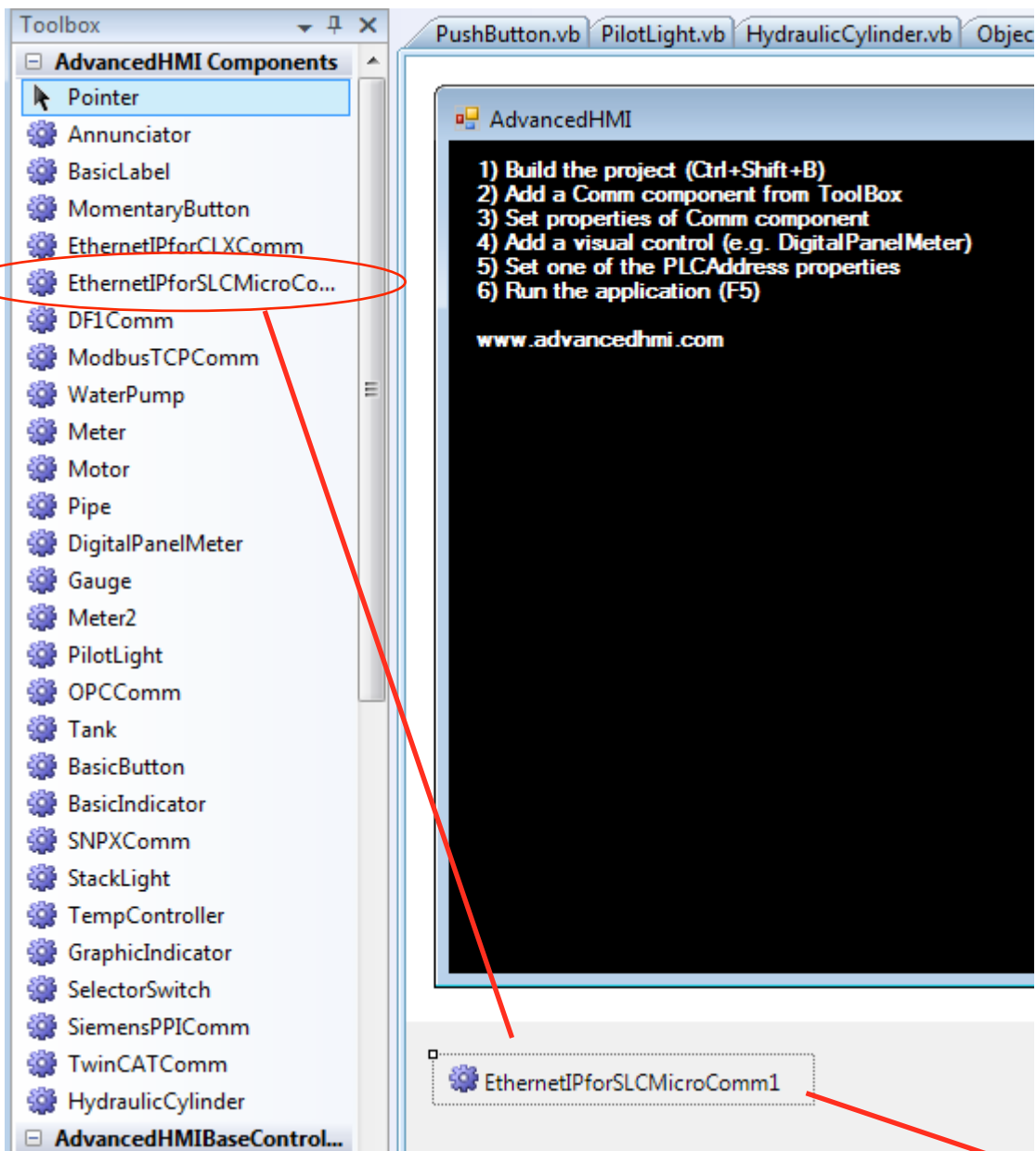
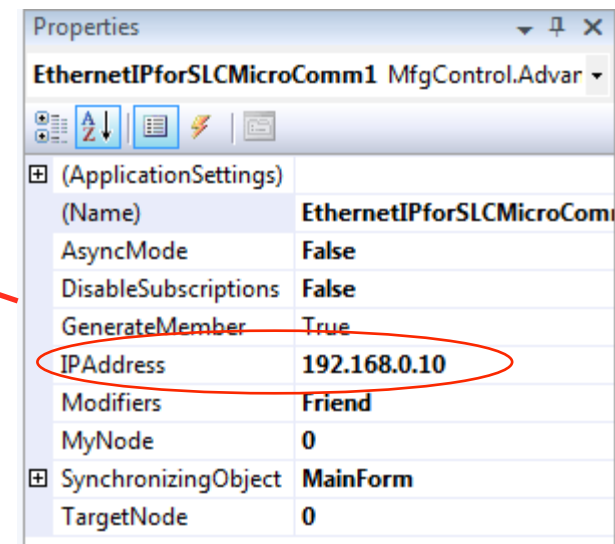


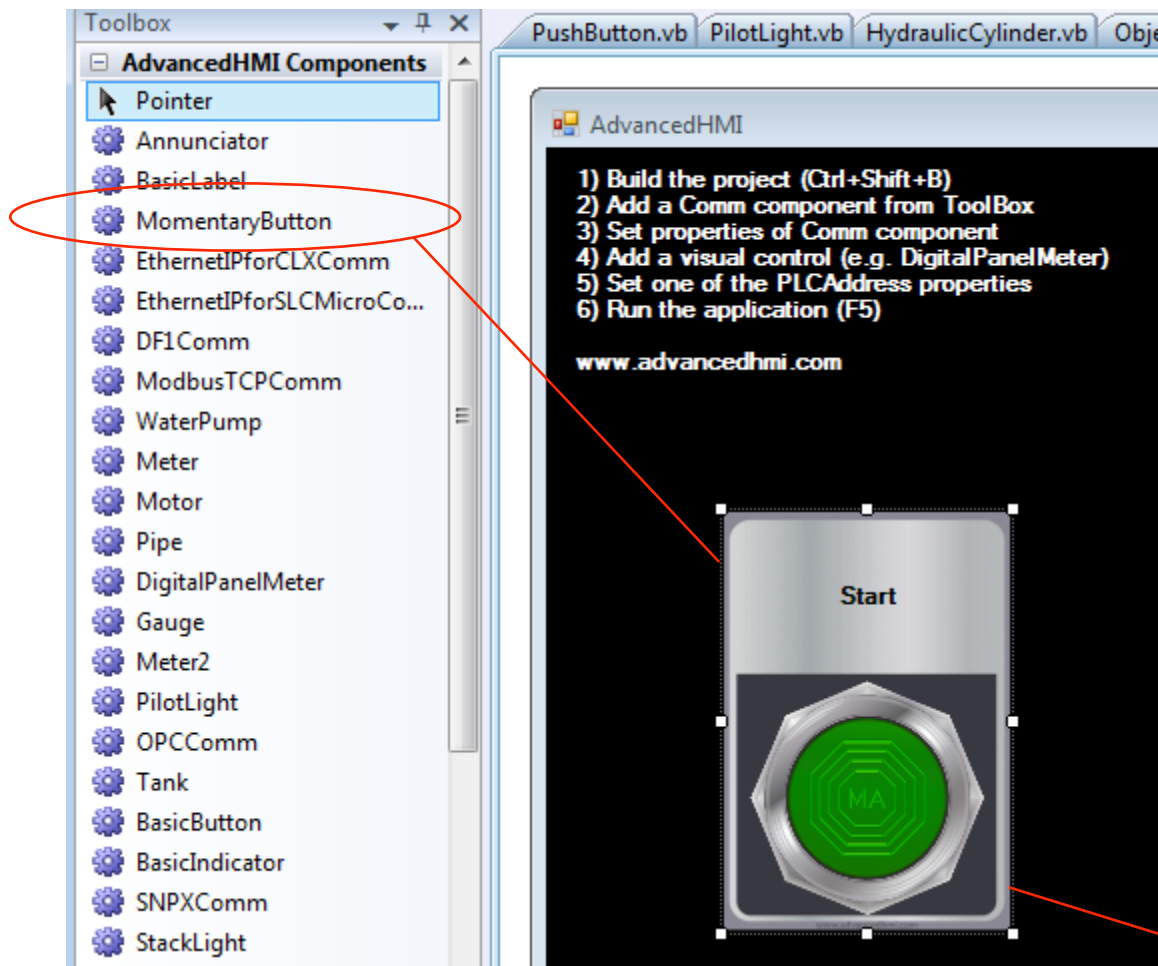
This will be the rung in the Micrologix



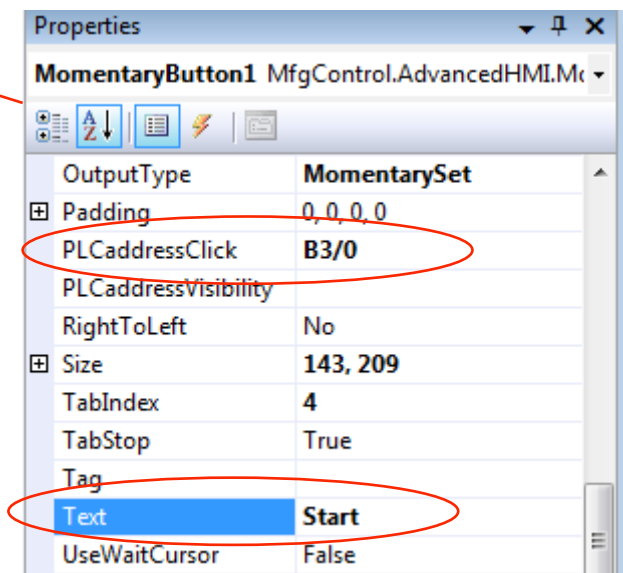


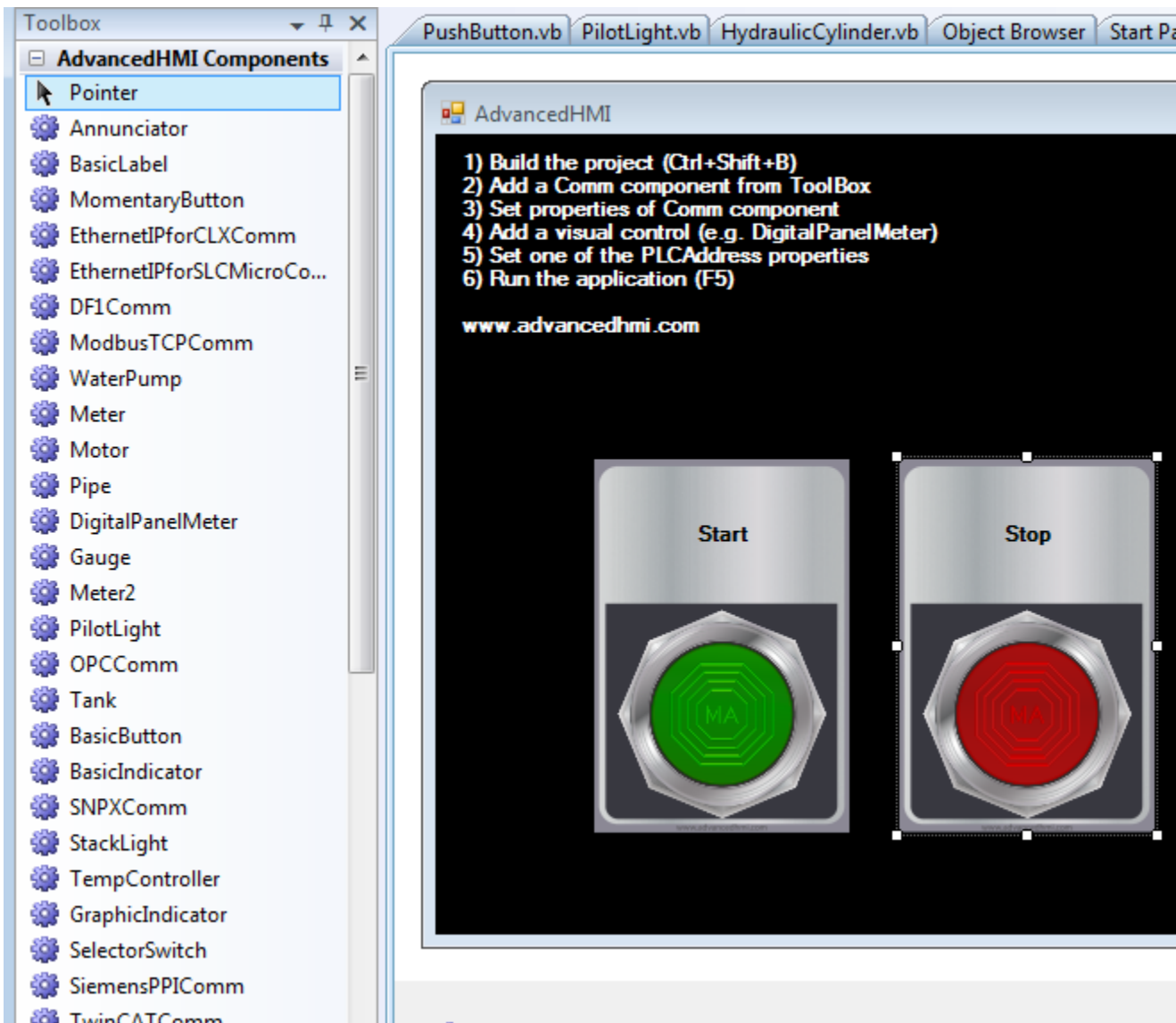
- Add an instance of EthernetIPforSLCMicroComm
- Set the IPAddress to the address of the MicroLogix



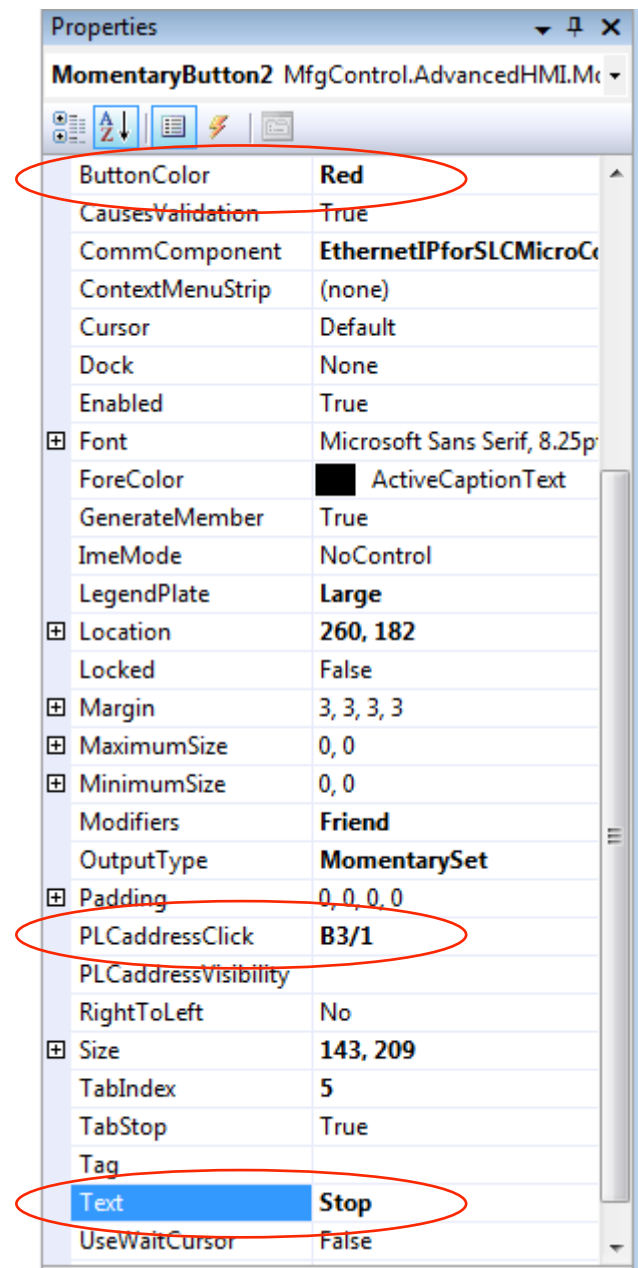


Add a MomentaryButton and set the properties as shown



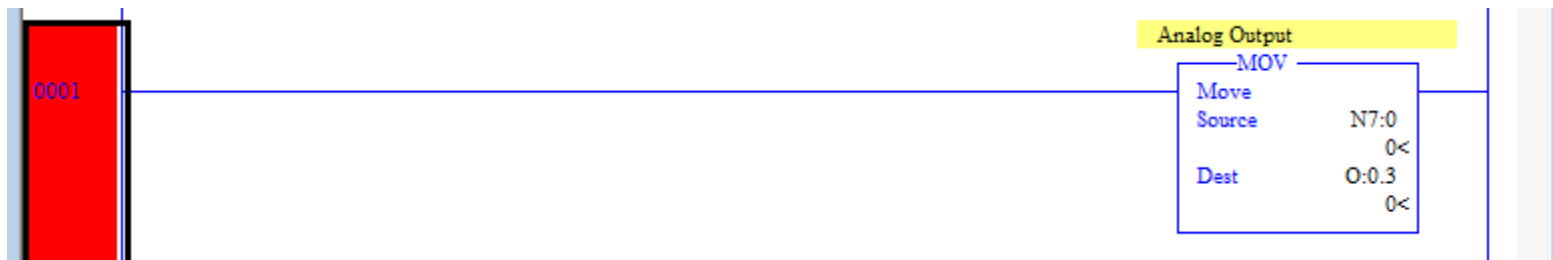


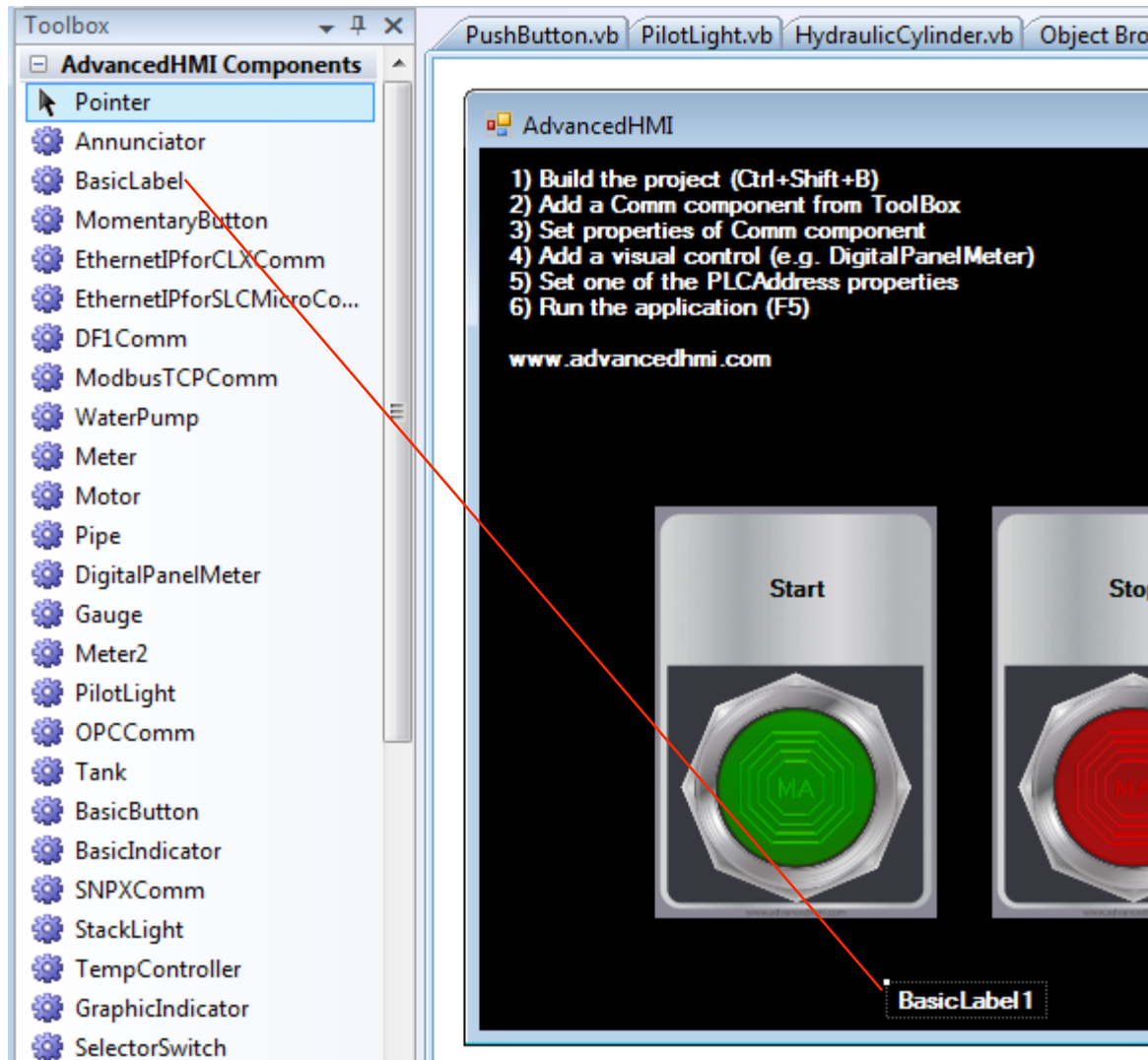
Add a second MomentaryButton and set the properties as shown



# Speed Control

This will be the rung in the Micrologix





Add a BasicLabel and set the properties as shown

With the PC connected to the MicoLogix, run the HMI application.  
The buttons will start and stop the motor.  
Click on the BasicLabel to get a pop keypad to change speed.

